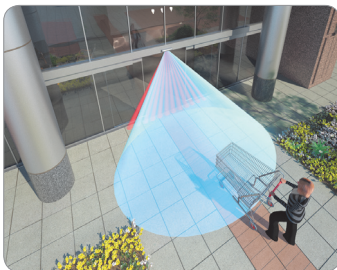




MIR60 MIR60-UNI

Activation + Safety



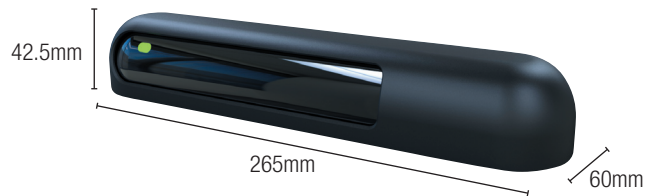
Dual Technology Sliding Door Activation & Safety

Combining microwave & infrared technology into one sensor to achieve timely door opening combined with pedestrian safety

- **Large Detection Area**
Ensures timely door activation in airport, supermarket, D.I.Y store and shopping centre installations.
- **Pedestrian Safety**
A dense curtain of infrared safety beams focused directly in front of the moving door protects pedestrians from injury.
- **Reduced Building Energy Loss**
Accurately adjustable detection area in conjunction with one way pedestrian detection reduces the door hold open time.
- **Installs in Minutes**
Push button sensor settings and a digital display facilitate a quick installation.

MIR60 MIR60-UNI

Activation + Safety



Technical Specification

Accessories



UTB
Under Mount Bracket



WC_IR/BL
Black Weather Cover



BF-2 Spot Finder

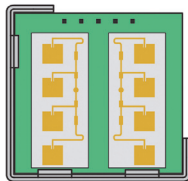


HA-130
Internal Mounting Bracket

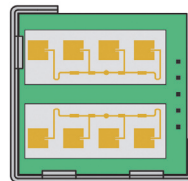
Model	MIR60-UNI		MIR60
Detection Method	Microwave 24.125 GHz (activation) plus Active Infrared (safety)		
Detection Mode Setting	Uni or Bi-directional detection		Bi-directional detection only
Installation Height	3.0m (9.84ft) Max		
Presence Timer	2s, 30s, 60s, ∞		
LED Indicator	Green:	Standby	
	Blue:	Motion detection (activation)	
	Red:	Safety/Presence Detection	
	Green + Red:	Low Reflection	
Power Supply	AC/DC 12 to 24V ±10% (50 -60MHz)		
Power Consumption	AC12V : 300mA Max, AC24V : 200mA Max DC12V : 160mA Max, DC24V : 80mA Max		
Test Input	6 [mA] at 24V DC		
Output Holding Time	Approx. 0.5 sec		
Operating Temperature	-20°C to +50°C, (-4°F to +122°F)		
IP Rating	54		
Weight	Approx. 250g (0.55 lbs)		
Available Colours	BL: Black		

Detection Area (inches/mm)

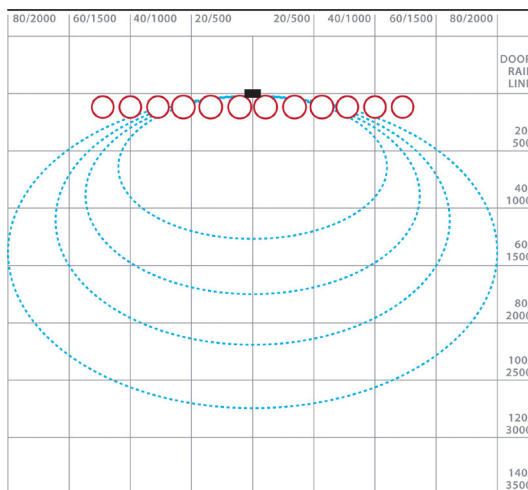
Wide Detection Area



Narrow Detection Area



Sensor installation height = 2.2m



Sensor installation height = 2.2m

